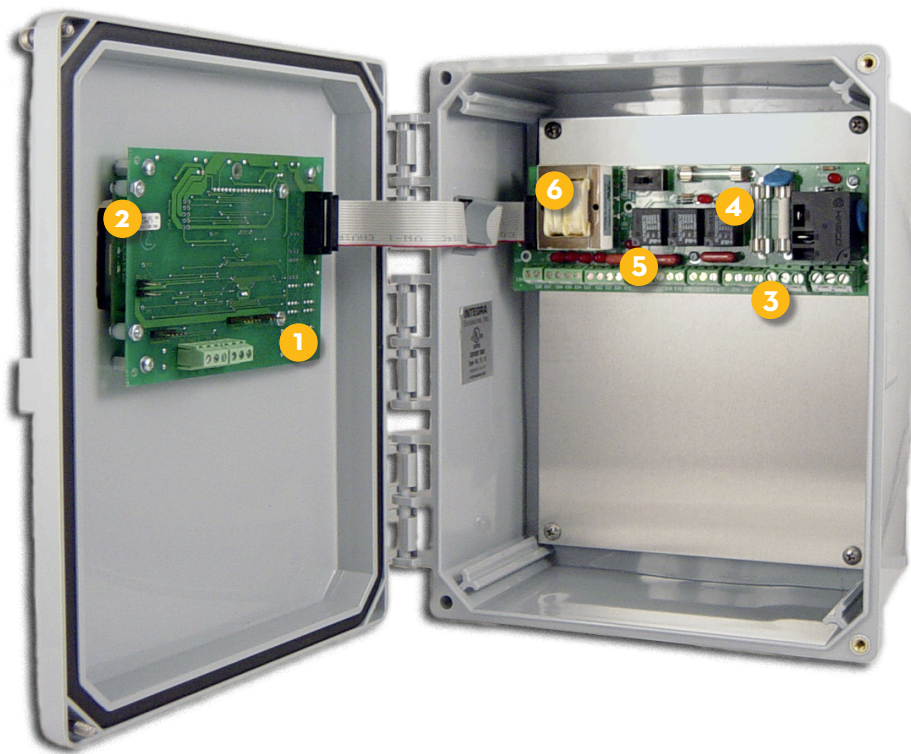


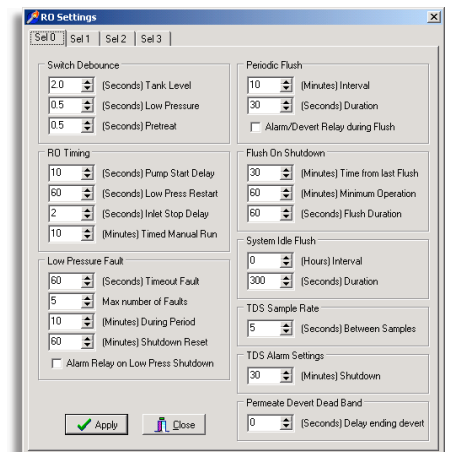
More Control, Less Hassle. A Superior Controller for Large RO Systems.



Custom Graphics. Use your logo or brand name to upgrade the appearance of your systems and strengthen your brand. Or, add value for your customers by providing custom branding—at no extra cost!

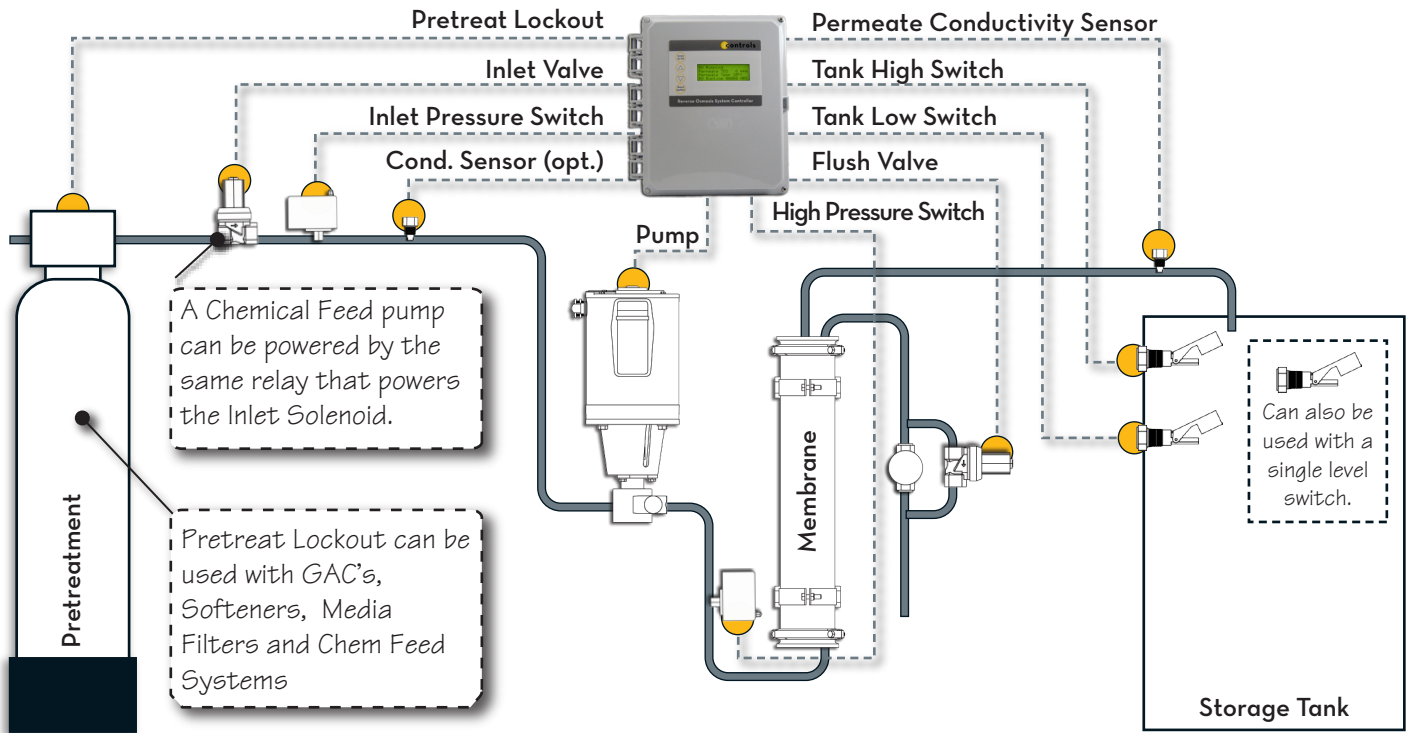
Advanced Features, Uncompromised Quality

- 1 Superior Hardware Design:** Modular for easier assembly, easier service and superior flexibility. Clean logical layout with clear labeling and easy access.
- 2 Superior Interface:** 4 line LCD with clear, common-sense information. Takes the guess-work out of monitoring the RO.
- 3 Superior Electrical Design:** High-current wiring is stationary - not subject to flexing and twisting every time the controller door is opened. The terminal block is mounted to the back panel where it belongs. Wiring is easier, cleaner and more secure.
- 4 Superior Protection:** Fully fused - because fuses cost less than circuit boards. Uses standard, readily-available fuses.
- 5 Superior Filtering:** Robust protection from surges, interference or miswiring.
- 6 Superior Power Supply:** Operates reliably on varying voltages.



More Control. I-controls flexible and powerful software gives you complete control over your RO system's performance. Choose from 4 complete program profiles—use the factory presets or we'll customize them for you.

Pictorial Schematic of a Typical ROC-3 System



ROC-3 Specifications

Outputs

Feed Solenoid	6A (Inductive). Voltage is the same as motor voltage—easily changed by user.
Flush Solenoid	6A (Inductive). Voltage is the same as motor voltage—easily changed by user.
Permeate Divert	6A. To drive valve, alarm, etc.
Motor	20A, 1HP @ 110V, 2HP @ 220V. Larger motors and 3 phase power require a separate motor contactor.

Other

Dimensions	12.5" tall, 11.25" wide, 5.0" deep (Available in larger and smaller enclosures.)
Weight	6.0 lb. (Basic Configuration, not including motor contactors, terminal blocks, etc.)
Environment	0-50°C, 10-90%RH (non-condensing)

Inputs

Tank level switches	(2) Normally-Closed. Can be used with a single level switch.
Inlet pressure switch	Normally-Open.
Pretreat lockout switch	Normally-Open.
Controller Power	110/220 VAC, 60/50Hz
Permeate Conductivity	0-250* PPM, 0-500 µs
Feed Conductivity	0-1250* PPM, 0-2500 µs *With cell constant of 1.0. Higher ranges require a different cell constant.